

GREAT FOUNDATIONS MAKE GREAT STORIES.

In the 1970s, Indian farmers had to import blades for their tillage needs as there was no local manufacturer. Then, a visionary Indian, Shri Harbans Lal Rajpal decided to help farmers increase their agricultural profits. He took the pioneering step of starting a factory that produced high quality and affordable harrow and plough disc blades. The rest, as they say, is history. Agri Till is now a premium agricultural components manufacturer that produces disc blades and other tillage equipment. It is a trusted name that provides quality services and products to its customers in India and in 20 countries across the globe.



GET IN TOUCH WITH US.

OFFICE ADDRESS: Agri Till India
Village Darar, Indri Road
Karnal – 132001, Haryana
India

Tel & Fax : +91-184-2252040
Mobile : +91-98124 33333
+91-98120 56070
+91-98644 77777

Website: www.agritill.com
Business Development (India & Overseas)
rohite@agritill.com
rahule@agritill.com
anuj.madan@agritill.com



SUPER-TOUGH AND FLEXIBLE, THIS BLADE IS PERFECT FOR THE LONG HAUL.

BORON STEEL DISC BLADE FOR DISC HARROWS & DISC PLOUGHS

- Right hardness ensures better wear resistance and toughness
- Sharpness of edge maintained even while it wears
- Improved flexibility
- Lower cost per acre
- Comes from a company with over four decades of experience



DISC BLADES

Agri Till India's best-selling product, the Boron Steel Disc Blade has served farmers successfully across the world for decades. Available in a wide variety of sizes, shapes & concavities, this Disc Blade can be modified to suit different equipment and applications.

**MANUFACTURED
USING THE
UNBEATABLE
BORON STEEL.**

Our blades are made from high quality Boron Steel Hot Rolled Coil that has to pass stringent chemical composition and mechanical tests in as-delivered condition.

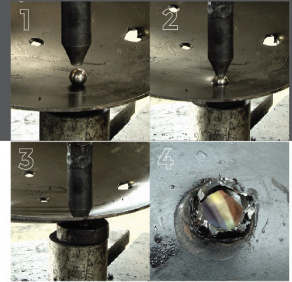
Our highly efficient heat treatment plant equipped with modern Electrical Furnaces ensures a consistent Hardness of 45-50 HRC in each blade. So what you get is a blade that is both hard and flexible at the same time. A real cyclone in all soil conditions!

MAINTAINING THE HIGHEST QUALITY STANDARDS.

The Ball Test is a toughness test that assesses the resistance of blade to fracture in tough soil conditions.

In Flexibility Test, the disc is flexed from different points on the edge and it should return to its original shape.

BALL TEST



**AVAILABLE IN A VARIETY OF SIZES AND FORMS TO
GIVE FARMERS A SUPERIOR TILLING EXPERIENCE.**



PLAIN
DISC



NOTCHED
DISC



CONICAL
DISC



FLAT CENTER
DISC



DOME
DISC



FILLER
DISC



RAISED
FLAT BACK
DISC



FLUTED
DISC



DISC BLADES RANGE

Diameter : 305 mm to 711 mm

Thickness : 3 mm to 8 mm

Disc Blades are available in a range of | Concavity | Center Hole Shape and Size | Pitch Circle Diameter | Bevel Length